

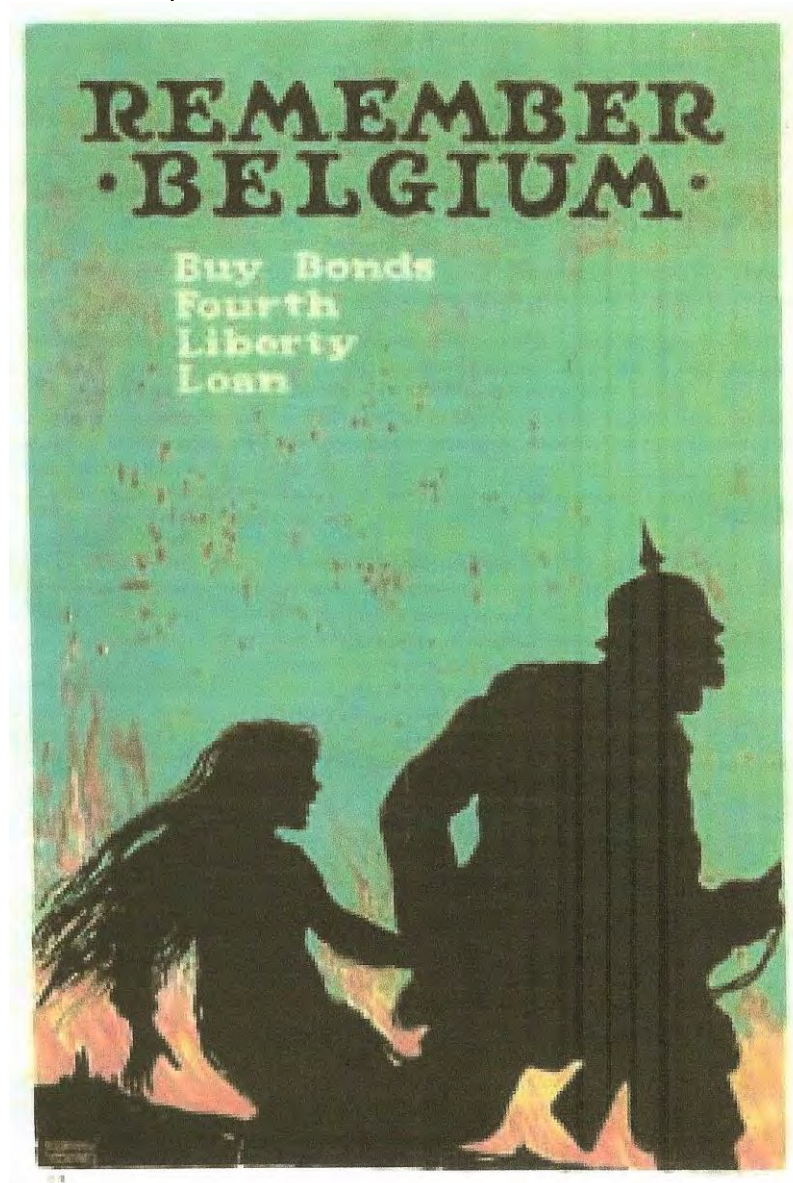
Letter to the editor NEED OF WARM BATHS (1. 5/8/14)

Sir. As you have no public warm baths in Canterbury, may I suggest that one of your householders throw open their bathroom to us "Terriers" at a reasonable charge. Billeted as some of us are, it is not possible to get these baths at present. The Japanese proved in war the value of an occasional warm bath.. Yours faithfully A "Terrier"

CANTERBURY ELECTRIC THEATRE NOW SHOWING "EUROPE IN ARMS" (1. 4.
5/9/14)
CANTERBURY CINEMA GERMAN ATROCITIES IN BELGIUM (1. 26/9/14)

THE LONG HAUL

As the opening German advance across Belgium was halted, the war became a trench stalemate, sucking in enormous quantities of men, horses and munitions.



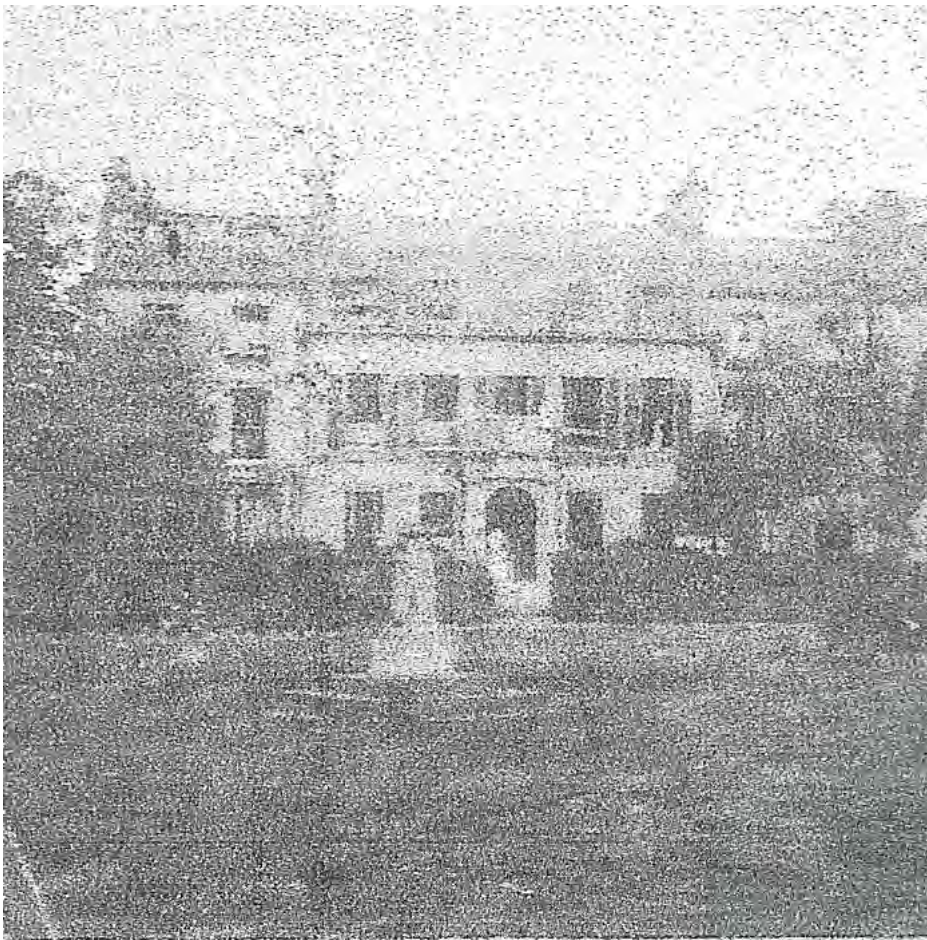
11 Remember Belgium poster

“Positive opinion management was accompanied by censorship”, and “the worst horrors were concealed”. “The papers exaggerated the Allied forces’ achievements and downplayed those of the enemies”. Provincial papers were less subject to scrutiny than was Fleet Street” *(2. p273)

The Kentish Gazette printed regular lists of casualties, letters from the front and obituaries of the dead, together with a continual mood of exhortation and virulent anti-German sentiment.

THE KAISER’S ORDERS EXTERMINATE THE ENGLISH PREPARING FOR THE WOUNDED AT CANTERBURY

Owing to the large number of troops quartered in and around the City, orders have been received to mobilise the two ladies Voluntary Aid Detachments (VADs) in Canterbury, Kent 70 and Kent 100. The member (of parliament) for Canterbury has placed Abbots Barton at their disposal. The senior detachment, Kent 70, is quartered at Dane John House (1. 3/10/14)... “lent through the kindnesses of the Misses Wightwick”.



12 The Dane John VAD hospital



13 Belgian soldiers at Abbots Barton



14 VAD poster

**BELGIAN SOLDIERS ARRIVE IN CANTERBURY
OVER 100 WOUNDED IN THE HOSPITALS**

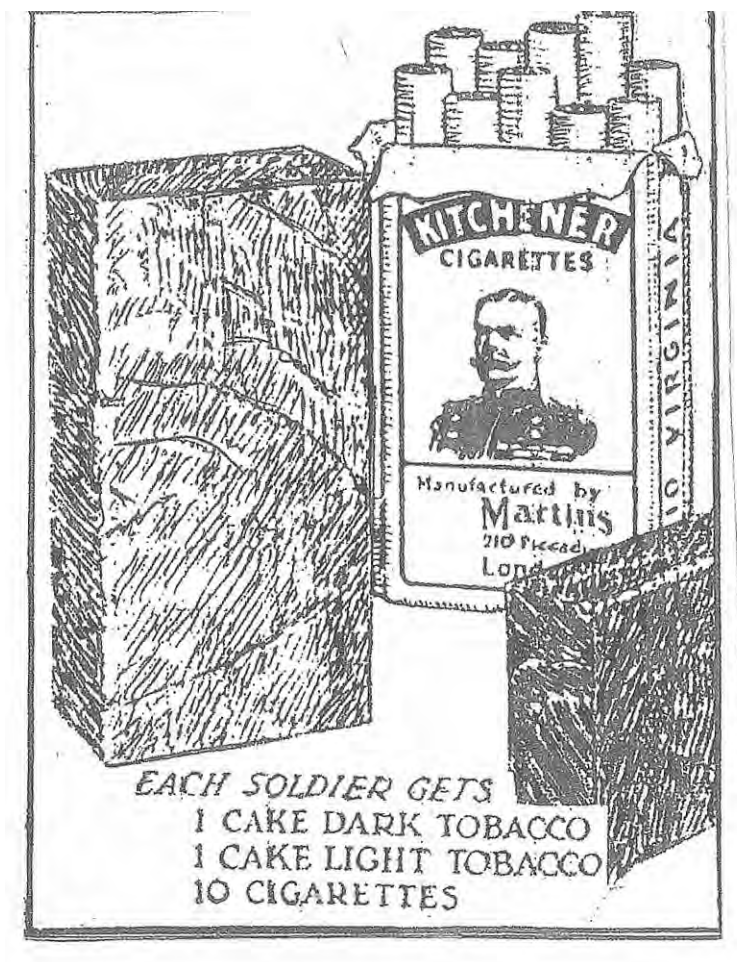
The sight of Belgian officers and soldiers, in their trim, red bordered uniforms, has become quite a familiar sight in the streets of Canterbury (1. 10/10/14)

Photo of convalescent Belgian soldiers (1. 14/11/14)

**TOBACCO FOR OUR SOLDIERS AT THE FRONT
YOU CAN HELP TO SEND EACH ONE ¼ lb
KENTISH GAZETTE SCHEME**

Our brave soldiers are in short supply. It will cost you only sixpence.

The French people have been very generous to Tommy Atkins in regard to the "smokes" but Tommy dislikes their cigarettes. He says they have no "bite" in them. He longs for British "fags". Tobacco Department Kentish Gazette (3/20/14)



15 Kentish Gazette tobacco scheme advertisement

Many traders used patriotic and appropriate slogans in their adverts in the Gazette

AD ECONOMY DURING THE WAR

The best form of economy is to preserve and make do with the possessions we already have. SCOTTS DYEING AND CLEANING processes will be found a most valuable aid in this direction (1. 3/10/14)

AD YOUR FIGHTING FRIENDS at the front will be glad to receive

A RICH PLUM PUDDING AND CHRISTMAS CAKE

FINNS STORES EARLY ORDERS (1. 7/11/14)

At Christmas 1914 the Kentish Gazette (9/1/15) reprinted a letter published in the Daily Mail from a member of the Queen's Westminster Rifles:

HOW ENGLISH AND GERMANS FRATERNISED AT CHRISTMAS

Last night (Christmas Eve) was the weirdest stunt I have ever seen. All day the Germans had been sniping very industriously with some success, but after sunset, they started singing and we replied with carols. Then they shouted "Happy Christmas" to us and we replied in German. It was a topping moonlight night and we carried on long conversations, and kept on singing to each other and cheering.



16 Christmas truce at the front

5.

**CHRISTMASTIDE AT CANTERBURY
VISIT OF THE MAYOR AND MAYORESS**

THE WORKHOUSE

The decorations at the Union Workhouse this year were not quite so lavish as usual but the general scheme was marked by even greater taste than heretofore and with a special appropriateness to the circumstances under which this year the Yuletide Season is being celebrated. The bottom female ward was prettily decked-out in the colours of the Belgian Comrades in arms and in another ward a representation of a soldier in the trenches and of ambulance workers in the field, whilst good wishes for the success of the allies, for our

English troops, and, the like, were prominently displayed in various parts of the institution.. (1. 2/1/15)

THE "NO LIGHTS" REGULATION

An order issued on Tuesday by the General Officer Commanding in Chief Central Forces, prohibited not only public lighting in the streets, but also the visibility of any artificial lighting from the windows of houses, churches, etc. (1. 30/1/15)

THREE MILLION MEN NEEDED

FINAL TRIAL OF THE VOLUNTARY SYSTEM (1. 6/2/15)

On 24 January 1916, almost a year after the above Gazette warning, The Military Service Act was passed, introducing conscription for all single men aged 18 to 40 and extended to married men in April 1916. Some people were exempt, such as men in jobs which were vital to war industries (reserved occupations). Anyone called up could appeal and have his case heard by a tribunal. (12.)

LORD MILNER'S GARDENER

APPLICATION FOR EXEMPTION AT THE BLEAN TRIBUNAL

The application by Lord Milner of Sturry Court for the exemption of his head gardener, Mr Phillip Boston, was...not assented to and.. left to Military doctors. (1. 20/5/16)

DAYLIGHT SAVING LEGISLATION

The Summer Time Bill comes into force at 2am on Sunday (21st May). All clocks are to be advanced by one hour.. up to 30th September. (1. 20/5/16)

DEATH OF KITCHENER OF KHARTOUM

Sinking of HMS Hampshire west of Orkneys (Obituaries & Tributes)

HIS KENTISH HOME

It will always be a matter of pride to Kentish folk the Lord Kitchener should have selected a residence within the County as his home during the closing years of his life. Lord Kitchener was four years ago the purchaser of Broome Park, Barham. (1. 10/6/16)

Between 1 July and 18 November 1916 one of the most costly battles of the War took place on the Somme. There were 60,000 British Empire casualties on the first day and over a million men died in the battle. (8.)

PROGRESS OF THE WAR

(Weekly heading during the war)

The "Big Push" in the West

It is wonderful news that we have been having from the Western Front these last few days... It constitutes probably the most important development in the whole course of the World campaign. The "New British plan". (1. 8/7/16)



17 Trench warfare

PROGRESS OF THE WAR

Our task in the West since the “Big Push”

When our offensive commenced on the Somme these unreasoning persons (referred to earlier in the piece) seemed to expect that the resistance of the Germans would melt away before our advancing armies..(1. 15/7/16)

During the War, “Dear Old Blighty” was a common sentimental reference, suggesting a longing for home by soldiers in the trenches. The term, which originated in the British Raj in India, was particularly used by World War 1 poets such as Wilfred Owen

6.

and Siegfried Sassoon. During the war, a Blighty wound – a wound serious enough to require recuperation away from the trenches but not serious enough to kill or maim – was hoped for by many, and sometimes self-inflicted. (8.)

The Kent Cricket Club War Memorial, was dedicated on 23rd August 1919 as a memorial to the great Kent and England bowler Colin Blythe, arguably the most famous cricketer killed in WWI. Blythe was killed at Ypres on 18th November 1917 aged 38. (7. p31)

Broad Oak Road

Site of the crash of a Gotha (German bomber) in the morning of 7th December 1917, in Lilley's Field...just to the south of Folly Farm. The crew survived, set fire to their aircraft and surrendered to the Rev.PP Somerville, Rector of St Stephen's Church, who was a Special Constable. (7. p25)

Food shortages were not a major problem in Britain initially. A bigger problem was rising prices because the government restricted the amount of food and other goods which could be imported.. Following a poor harvest in 1916 (5. p140), the situation deteriorated in 1917 when the Germans adopted a tactic of unrestricted submarine warfare. Essential supplies ran out and in April 1917 Britain was six weeks away from running out of wheat. In order to release men and increase the work force and home farming acreage, the Women's Land Army was formed in February 1917. (8.). 10% of the WLA were to be employed in Kent. Another way of releasing men was the formation in 1917 of the Royal Defence Corps of soldiers too old for the front. This anticipated The Home Guard of 1940. (9.)



18 Women's
Land
Army